

Our principles of Safety,
Value and Performance make us
the **No.1 choice worldwide**

ACTIVE
BIRTHPOOLS
www.activebirthpools.com

Active Birth Pools




**building
better
healthcare
awards 2015**
Highly Commended

The world's leading supplier
of water birth pools - est. 1987

www.activebirthpools.com.au



Keith Brainin
Founder & Director

If you're looking for a water birth pool we're uniquely qualified to be of service

We helped pioneer the use of water for labour & birth by providing the pools that made this revolution in maternity care possible.

Since 1987 we've supplied 1,000's of water birth pools.

We've worked with end-users, specialists & manufacturers to evolve & improve our capabilities.

Our unrivalled wealth of experience enables us to provide water birth pools that minimise risk, optimise results & maximise value.

We have achieved success by caring about every detail & keeping things simple.

The combination of superior materials with cutting-edge engineering & production enable us to offer the finest water birth pools available.

Long established as the benchmark standard

Our new pools are a quantum leap forward in every respect

1. 20 year guarantee
2. Life expectancy of 25+ years
3. Optimum performance – minimum risk – maximum value
4. Fabricated in Ficore®, a superior material exclusive to Active Birth Pools
5. Rated No. 1 for safety, comfort & support
6. Designed to facilitate & encourage physiological labour
7. Handmade to order in England by highly skilled craftsmen

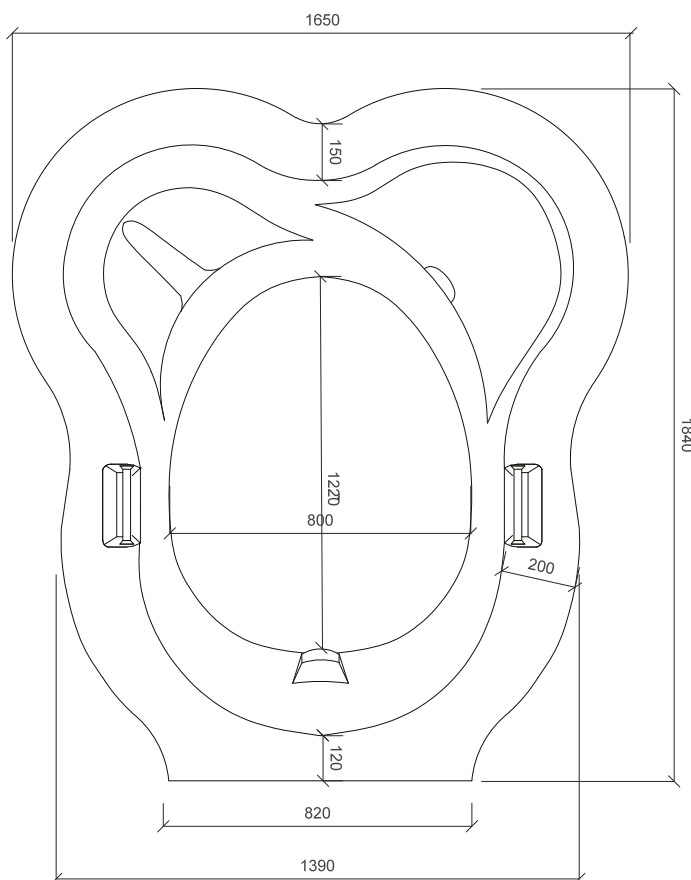


Highly commended for the quality of design and manufacture at the Building Better Healthcare Awards

The judges said that the Active Birth Pool succeed from all critical standpoints



The Active Birth Pool



Cad plan available

The pinnacle of water birth pool development.

An incomparable combination of superior materials & state-of-the-art manufacturing that provides mothers & midwives with unparalleled comfort, safety & support.

Specifications:

Dimensions:	1840mm (l) x 1650mm (w) x 750mm (h) / 72" (l) x 65" (w) x 29.5" (h)
Depth:	640mm / 25"
Weight (empty):	90kg / 198lbs
Capacity:	550 litres (filled to 10cm below rim) / 145 gallons
Material:	Ficore® composite



[Click here](http://www.activebirthpools.com.au) for further information

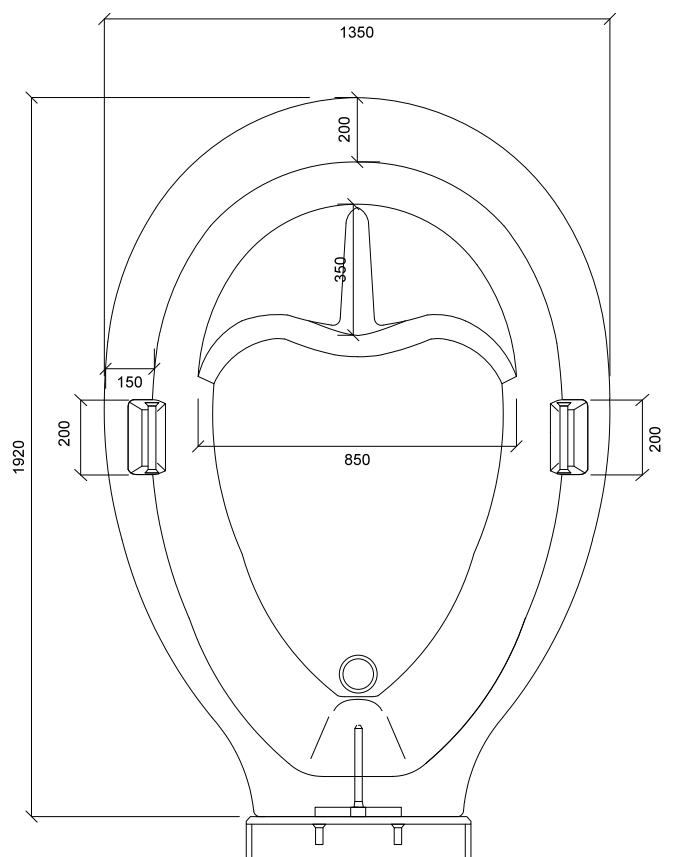


The Venus Water Birth Pool

The mid-size Venus Pool's design heritage stems from the proven principles we developed in the 1980's and takes them to new levels with seamless construction in Ficore® composite.

Specifications:

Dimensions:	1920mm (l) x 1350mm (w) x 750mm (h) / 75.5" (l) x 65" (w) x 29.5" (h)
Depth:	640mm / 25"
Weight (empty):	80kg / 176lbs
Capacity:	500 litres (filled to 10cm below rim) / 132 gallons
Material:	Ficore® composite



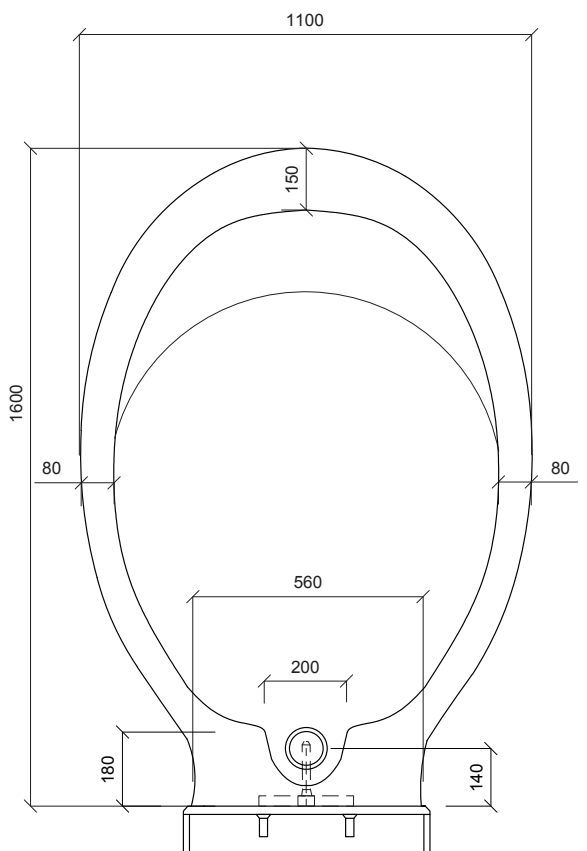
Cad plan available



[Click here](#) for further information



The Princess Water Birth Pool



Cad plan available

Designed to fit in rooms where space is at a premium, the Princess Pool is surprisingly spacious and gives mothers room to explore and be supported in the most comfortable and beneficial positions.

Specifications:

Dimensions:	1600mm (l) x 1100mm (w) x 770mm (h) / 63" (l) x 43" (w) x 30" (h)
Depth:	640mm / 25"
Weight (empty):	70kg / 154lbs
Capacity:	450 litres (filled to 10cm below rim) / 118 gallons
Material:	Ficore® composite



[Click here](#) for further information



Light & Sound

Light and sound play a significant role in the creation of a better birthing environment

Our easy-to-use lighting & sound systems make it simple for mothers & midwives to control and personalise the atmosphere & ambiance of the room.

In addition to making it easier for midwives to see into the pool the clear LED light illuminates the room with a soft glow.

The multi-colour LED lighting system allows users to cycle through a range of colours to find the hue most they find most appealing.

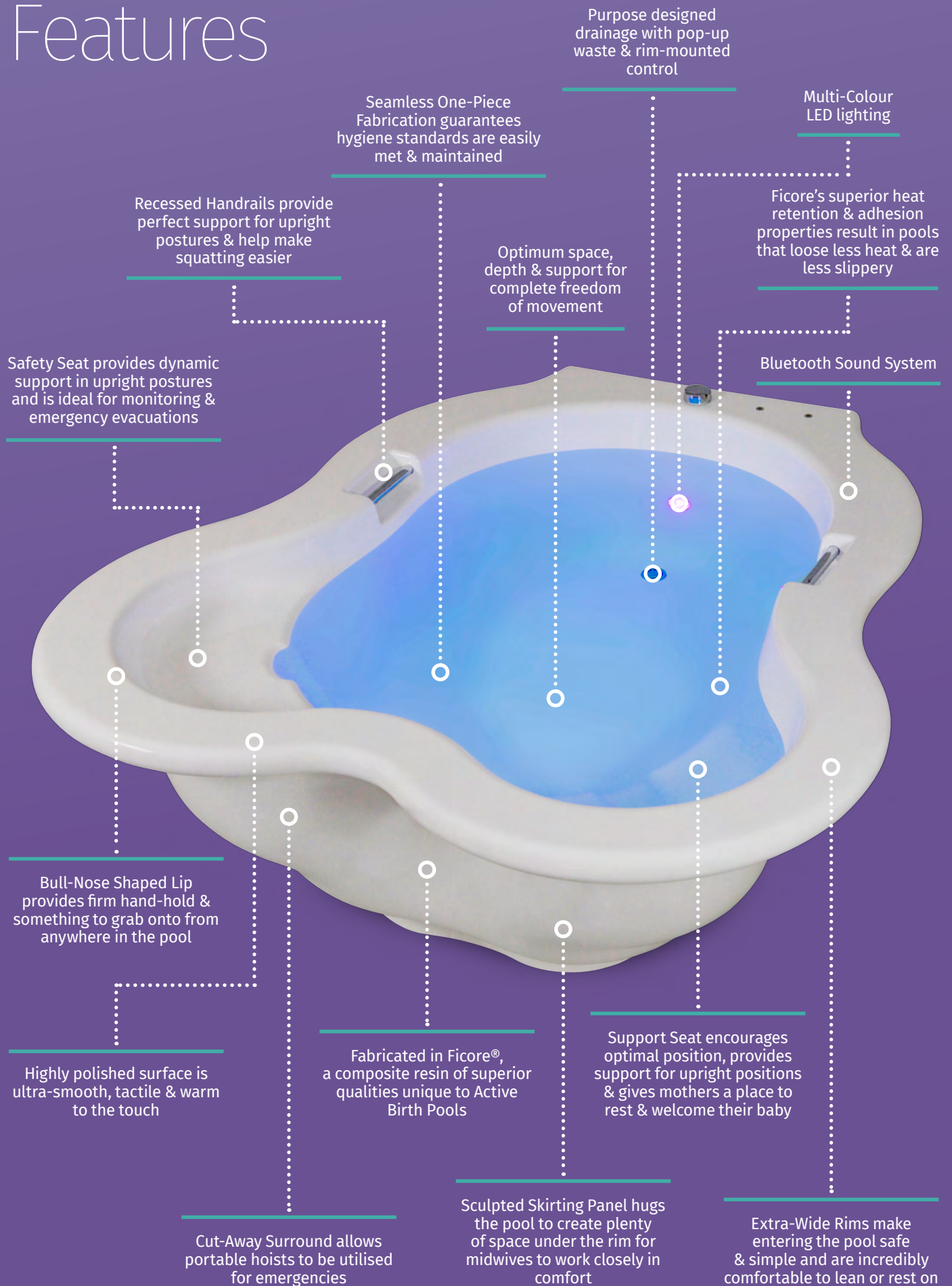
The bluetooth sound system enables users to wirelessly connect their phones or devices and listen to the music of their choice.

Two integral speakers turn the birth pool into a highly refined audio loudspeaker.



[Click here](#) for further information

Features



Active Birth Beanbag and Mat

The introduction of these few simple, easy to use, cost effective items transforms the birthing environment.

Specially designed to give mothers the freedom to move and be supported in the postures most beneficial for encouraging a physiological labour & natural, active birth.

The Active Birth Mat is perfect for use alongside a water birth pool.

It provides mothers with firm support for standing or squatting, cushions them when sitting or kneeling and is comfortable for lying down on.

The Active Birth Beanbag is taller & firmer than other beanbags to provide support for mothers in upright postures.

The medical grade waterproof fabric used to cover the mat & beanbag is soft and pleasing to the touch.



Active Birth Beanbag

Dimensions: 800mm (dia.) x 700mm (h)
/ 31.5" (dia) x 27.5" (h)

Weight: 4.48kg / 10lbs

Active Birth Mat

Dimensions: 1500mm (l) x 1000mm (w) x 20mm (h)
/ 59" (l) x 39.3" (w) x 0.75" (h)

Weight: 0.98kg / 2.2lbs



Our principles of Safety,
Value and Performance make us
the **No.1 choice worldwide**

"I can't tell you how much your pools have revolutionised birth."

K. WILKIE - NHS Midwife

"I've used the Active Birth pools for 15 years and I have always found them really beautiful, technically perfect & easy to use."

I love the simplicity of the lines that makes cleaning & disinfecting easy. I can't imagine a birth centre without an active birth pool!"

DR. LUCIA ROCCA-IHENACHO - Lecturer in Midwifery & NIHR Research Fellow

"We love your active birth pools, so much so we have one in every room."

JO TALBOT - Chorley & Preston Birth Centre Manager

"Most of the environments I see where women use water for labour & birth have Active Birth Pools."

Not only are they gloriously spacious & inviting, they are made to the highest specifications & considerations to maximise safety. In short, they are second to none!"

SHEENA BYROM - OBE Midwife Speaker Author Honorary Fellow RCM Honorary Doctorate - Bournemouth University



Active Birth Pools UK & International

41 Grasmere Road

London N10 2DH

+44 (0) 208 444 1411

keith@activebirthpools.com

Active Birth Pools Australia

5 Daking Street

North Parramatta NSW 2151

+61 (2) 9890 5687

sales@activebirthpools.com.au

Active Birth Pools Scandinavia

GM Medical A/S

Blokken 11 DK-3460 Birkerød

Denmark

+45 4557 0881

bv@gm-medical.com

Active Birth Pools Benelux

Medical Dynamics

Wijde Wade 1a

3439 NP Nieuwegein

The Netherlands

+31 (0) 30 285 11 05

info@medicaldynamics.nl

Active Birth Pools Germany

SL-Medical

Eichenring 24

D-84562 Mettenheim

Germany

